

REAR BRAKES

Parts

- 2 Rotors- drilled to bolt pattern
- 2 Calipers
- 2 bracket sets – 4 bracket parts total
- 2 shims- axle
- 2 shims caliper
- 8 bolt/nuts and washers to hold axle - Backing. 3/8- 16 2 inches long
- 4 bolts and washers to hold bracket to bracket- 7/16-14 1.25 inches long
- 4 caliper bolts/washers - 12M 1.175 23MM
- 2 emergency brake cables
- 1 emergency brake rod with lock nut and washer
- 1 emergency brake cable holder
- 1 emergency brake cable puller
- Brake line kit (2 flex lines, 2 hard lines, t fitting and t to factory flex line connector)

Reference

Triumph TR7/8 manual

Global

Apply medium strength Loctite to all bolts when installed

Procedure

1. Remove all emergency brake cables and parts from rear and under the car where connects to handle
2. Remove brake lines on rear from each wheel and at center connection
3. Remove rear wheels and brake drums
4. Remove 4 axle bolts and pull-out axle and remove backing plate
5. If required, grind corner off shock bracket on rear for bolt clearance see [Picture 1R](#)
If required, grind axle collar welds to remove roughness and check fit the supplied bracket- see [Picture 1R](#)
6. Install axle shim in place of removed backing plate and reinstall axle and use supplied bolts to torque axle assembly back into place
7. Remove axle bolts and install supplied bracket using the supplied bolts washers and nuts and torque to 23 ft/lbs- see [Picture 2R](#)



8. Bolt the second supplied bracket with supplied bolts to the 1st bracket and torque bolts 37 ft/lbs
9. Install the rotor
10. Install brake pads in caliper
11. Bolt the caliper to the second bracket (use provided shim if required between the bracket and caliper) and torque bolts 55 ft/lbs see picture
12. Connect flex brake lines to caliper
13. Repeat installation for other side of car
14. Connect hard brake lines provided between flex lines and t- fitting provided which is on passenger side of rear
15. Connect third hard line to original soft line- see Picture 6R
16. Install emergency brake cables to calipers and route – see Picture 3R
17. Install emergency brake rod into brake handle and install cable puller onto rod with nut/washer – see Picture 2R
18. Install brake cable holder (some cars have studs in place to locate this bracket, some require drilling in tunnel to secure) and insert cables thru hold and connect cable lines into puller – see Picture 5R
19. Engage the brake from inside the car and ensure the emergency brake works properly.
20. Adjust the nut on the pull rod to add or subtract braking force if necessary.
21. Bleed brakes and check for leaks under heavy pedal compression

Picture 1R



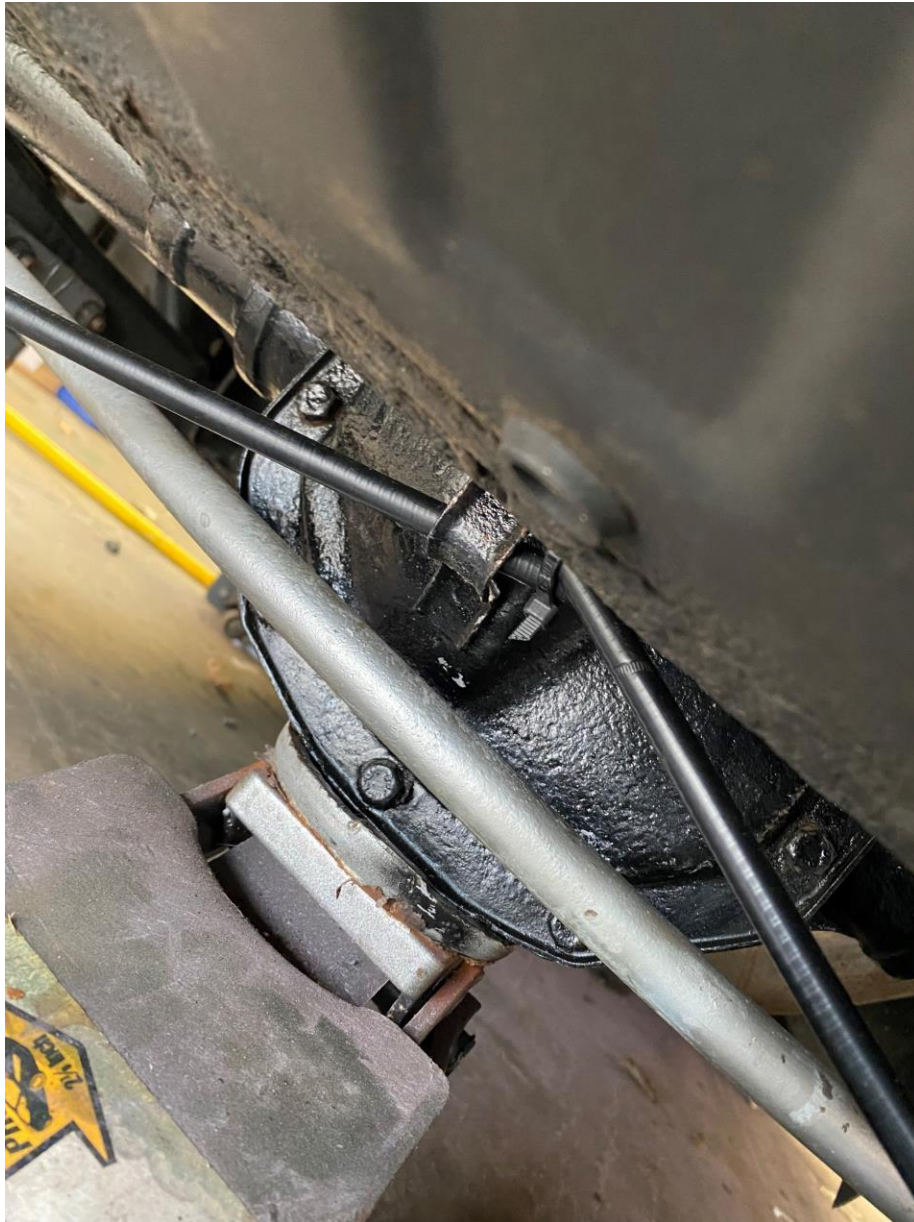
Picture 2R



Picture 3R



Picture 4R



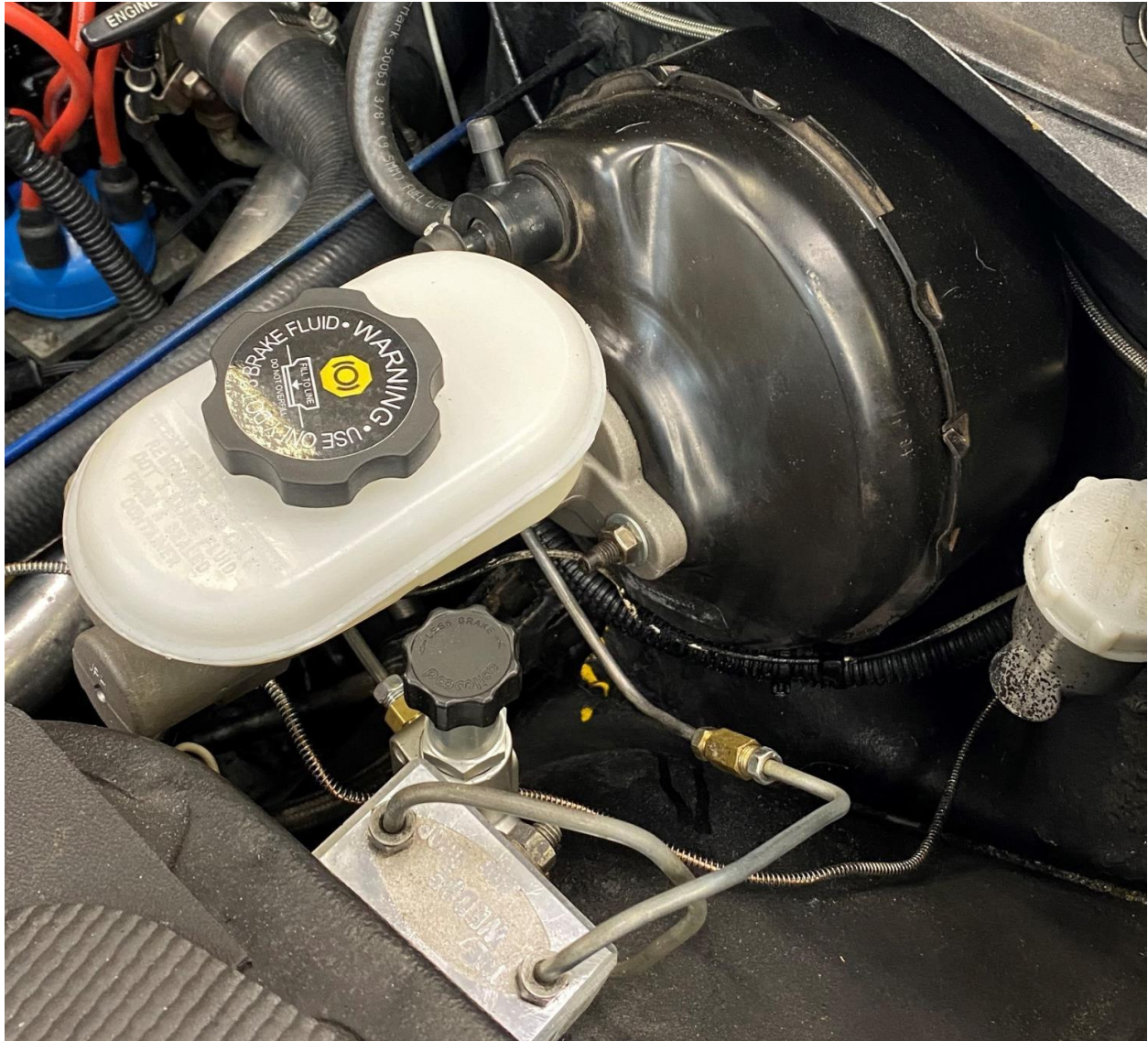
Picture 5R



Picture 6R



Picture 7R



FRONT BRAKES

Parts

- 2 Rotors- drilled to rotor pattern 10.25 inch
- 2 Calipers
- 2 brackets
- 8 rotor bolts/nuts/washers- 3/8-16 1.5 inches long with poly lock nuts (25 ft/lb torque)
- 4 caliper bolts/washers- 12M 1.175 50MM (2 allen head, 2 normal hex) (55 ft/lb torque)
- Brake line kit (2 flex lines factory GM, 2 hard lines connectors)

Reference

Triumph TR7/8 manual

Global

Apply medium strength Loctite to all bolts when installed

Procedure

1. Disconnect brake line at strut and remove front rotor assembly (retain both bolts and lock washers for reuse-
2. spacer on lower bolt not used)
3. Remove rotor assembly
4. Remove dust deflector
5. Bolt supplied bracket onto strut assembly using bolts removed from caliper and torque (see Triumph manual) (see [Picture 8F](#))
6. Unbolt rotor from spindle assembly per Triumph manual
7. Bolt new rotor provided to spindle assembly with supplied bolts and torque to 25 ft-lb ([Picture 9F](#))
8. Trim dust deflector per pictures 2 and 3 and reinstall ([Picture 10F](#) and [Picture 11F](#))
9. Install rotor assembly (per Triumph manual)
10. Ensure caliper bracket GM bump stop is ground/cut off prior to install. Once removed grind smooth ([Picture 12F](#))
11. Install caliper provided with bolts provided (see [Picture 13F](#) and [Error! Reference source not found.F](#)) and torque bolts
12. Install brake pads
13. Install brake lines and connect to existing fitting on the strut (see [Picture 13F](#))
14. Repeat install for the other front wheel
15. Bleed brakes

Picture 8F



Picture 9F



Picture 10F



Picture 11F



Picture 12F

Tang to remove



General Example with Tang Removed



Picture 13F

